

Optimizing data center white space for GenAI



Connect reliably

Active optical and direct attach cables (AOCs/DACs)

- With a range up to 100 meters and speeds up to 400GB, AOCs are ideal for linking AI servers and equipment between racks.
- For short-range transmissions, copper DACs provide a cost-effective means to connect equipment within the same rack.



Fiber network solutions

- Enable high-speed, low-latency data transfer with pre-terminated cables, modular patch panels, and scalable breakout cassettes.

Cable management

- Organize power, network, and other cabling in and between racks, especially when the addition of new equipment leads to a corresponding increase in cable requirements.
- Simplified cable routing enhances workspace efficiency, improves airflow for equipment performance and facilitates maintenance.



Power & protect

End-of-row and facility UPS systems

- An end-of-row UPS, such as Eaton's 93PM three-phase UPS, stands in the white space alongside networking equipment in the same footprint as a standard IT rack, and runs up to 400 kW.
- For facility power within the gray space, a monolithic UPS like the Eaton 9395XC UPS can support up to 1500 kW, has the smallest footprint with the highest power density on the market and is compatible with lithium-ion batteries.



Rack power distribution units (PDUs)

- Eaton's selection of PDUs includes models up to 36 kW to handle the demands of GenAI equipment. In addition, a managed PDU connected to the network saves time, increases visibility and reduces the need for onsite visits through outlet-level remote monitoring, environmental monitoring, and control of connected devices.

SmartRack® heavy-duty enclosures

- Support weights up to 5,000 lb. and depths up to 54 inches, providing ample space for the high-density requirements of GenAI equipment.
- Compatible with liquid-cooled coolant distribution units (CDUs) and direct-to-chip cooling units.

Monitor & manage

Brightlayer software

- Eaton's Data Center Performance Management (DCPM) software, part of the Brightlayer Data Centers suite of software, enhances efficiency by providing real-time monitoring, asset management, and customized alerts for remote and environmental conditions.

Environmental monitoring

- Eaton's Environmental Monitoring Probe (EMP) Gen 2 helps you stay on top of temperature, humidity, and airflow conditions remotely to proactively protect GenAI equipment from adverse environmental conditions.



Containment and conveyance systems

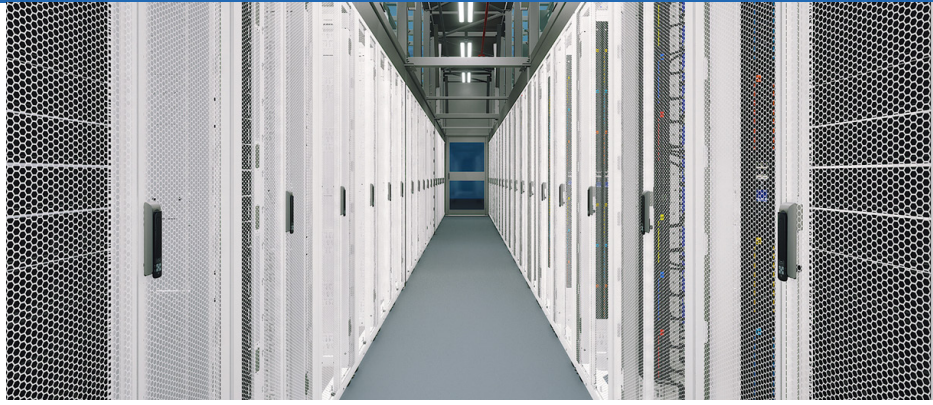
- Hot-aisle containment (HAC) systems, such as Eaton's structural steel independent containment system (ICS), integrate air isolation and temperature containment with cable conveyance.
- Floor-standing or ceiling-mounted HAC systems are quick to deploy and offer built-in future-proofing by enabling easier cabinet changes for future growth.



Powering Business Worldwide

Solutions for GenAI

The computing power in a GenAI rack can be twice as much as a standard high-density IT rack. With that much AI technology, computing, power, and heat condensed into one location, the rest of the equipment in the rack must be given as much attention as the servers, or performance and reliability will suffer.



Save time



- Count on Eaton to deliver a comprehensive range of AI-driven solutions that will help support your data center.
- Our remote monitoring solutions reduce the need for time-consuming onsite visits.

Save money



- Invest in solutions that safeguard your systems and enable seamless growth.
- Explore Eaton's range of cost-effective AI solutions to minimize the risk of expensive downtime.

Reduce risk



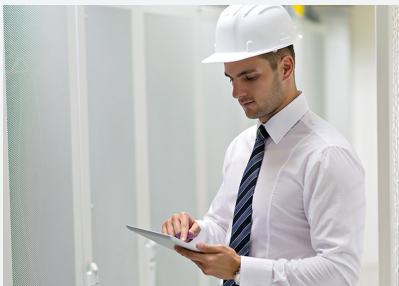
- Maximize your data center's potential with solutions built to support the increased density demands of GenAI.
- Design the optimal solution for your GenAI environment with Eaton's customizable suite of integrated products.

Customers agree: Eaton's quality and value are second to none!

Stand-Up Products and Company

"I've looked at other products and have always returned to Eaton Tripp Lite series. Their customer support is top notch, they're always very responsive and work to resolve any issues."

Bud
South Dakota



Many Units, Always Reliable

"Been using these backup UPS units, one model or another, for several years. They have always been solid, dependable and consistent."

KrikIT
London, ON



Another Quality Product

"I have utilized their products for over 20 years. From racks to PDUs, to UPS systems and accessories, they never disappoint in number of options, quality, functionality and customer service."

IS Director
Green Bay, WI