

INTEGRATING EATON
INTO OUR VIRTUAL
NETWORK IS OUT OF
THIS WORLD!



Power management for VMware environment

Eaton is dedicated to making your work life easier by providing the tools you need to manage your power infrastructure all from your **VMware® vCenter** dashboard or **vRealize Operations Manager** platform.

How Eaton fits into the virtual landscape

Eaton's Intelligent Power Manager (IPM) software is certified as VMware ready and simplifies power management by providing the needed tools to monitor and manage power devices in virtual environments. Seamlessly integrating into VMware's vCenter server and vRealize Operations Manager, IPM ensures system uptime and data integrity by allowing you to remotely monitor, manage and control devices on your network from a single dashboard.

IPM adds value to your virtualized environment by allowing you to:

- **Increase productivity** with easy set up and integration into vCenter
- **Prevent downtime** by taking action on real-time notifications of power and environmental events
- **Avoid data loss** by initiating Site Recovery Manager
- **Simplify data center operation** through validated integration with VMware all within a single pane of glass

Why being VMware Ready is important

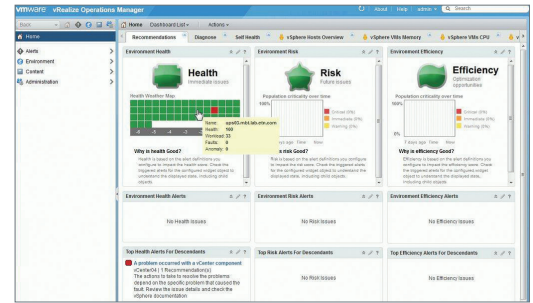
VMware Ready products and solutions interoperate seamlessly with a virtual infrastructure and have met specific VMware integration and interoperability standards. Since IPM is VMware ready that means it integrates quickly and you know it will work.



Powering Business Worldwide

Software-defined data center and vRealize Operations Manager

Eaton's Infrastructure Management Pack—downloadable for free at Eaton.com/vRealize—allows you to monitor and manage the health, risk and efficiency of your facility infrastructure by plugging IPM into vRealize Operations Manager. Additionally, you can take advantage of the robust vRealize Operations Manager predictive analytics to assess the upcoming risks associated with your power and environment.



Eaton's IPM software integrates into vRealize Operations Manager

Manage power from your vCenter dashboard

IPM integrates into VMware's vCenter Server™ virtualization management solution, letting you manage power to your virtualized environment through the vCenter web client and dashboard. This easy-to-set-up solution provides a complete view of your power devices all from the vCenter dashboard you're already using.

IPM's flexibility of grouping virtual machines allows you to shutdown, suspend, power on/off and migrate individual or groups of VMs providing a fully customizable virtual environment.

Global IPM features

Feature	Value	IPM Basic	IPM Silver	IPM Gold
Control rack PDUs	Increase control by triggering on, off and reboot commands for Eaton ePDU G3 outlets in response to power and environmental events	✓	✓	✓
Manage third-party power hardware	Increase flexibility with option to use existing power infrastructure, saving time and money during deployment	✗	✗	✓
Send mass configuration and firmware upgrades	Simplify deployments by remotely mass configuring settings and firmware on Eaton UPSs and rack PDUs	✓	✓	✓
Create custom events	Improve responsiveness with customizable events which enables any data to become actionable	✗	✓	✓

IPM enables the following through VMware

Feature	Value	IPM Basic	IPM Silver	IPM Gold
vCenter integration	Link IPM directly to vCenter for power management from a single interface	✓	✓	✓
vRealize Operations Manager Integration	Monitor the health, risk and efficiency of power devices; Identify failures before they occur with predictive analytics	✗	✓	✓
Site Recovery Manager Integration	Automatically pre-sync the back-up site to avoid data loss during a power event	✗	✓	✓
Virtualized Host Shutdown	Gracefully shut down virtualized host - agent not required on host	✓	✓	✓
Infrastructure Shutdown	Safely shut down and securely restore high availability environments without crashing virtual machines or host server	✗	✓	✓
Targeted Virtual Machine Management	Shutdown, suspend, power on/off and migrate individual or groups of VMs	✗	✓	✓
Targeted load shedding	Extend battery runtime by suspending non-critical virtual machines	✗	✓	✓
Targeted Virtual Appliance Management	Set configuration policies and actions directly on vApps to automate corrective actions based on power events	✗	✓	✓
Virtual Machine Status Monitoring	View status of VMs and vApps from a single interface	✗	✓	✓

Learn more today at Eaton.com/VMware